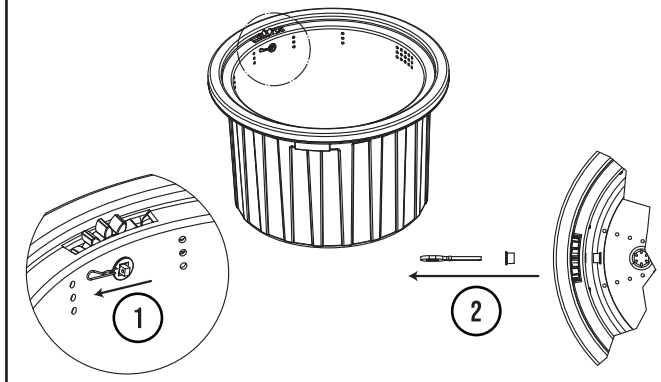


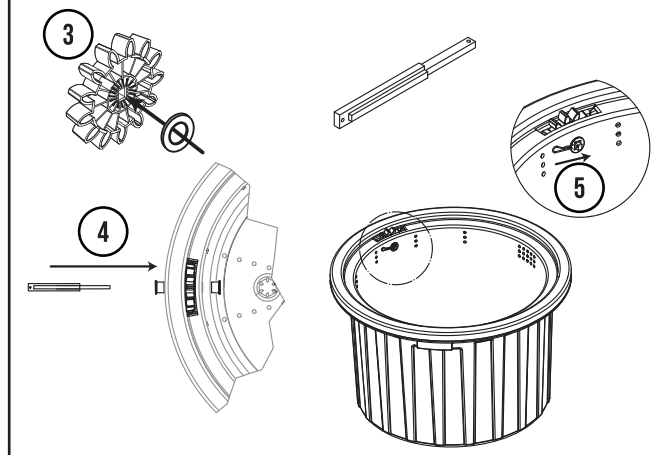
Installing Mixing Motor and Motor Bracket

To minimize contact with waste, it is advisable to install the mixing motor for the first time only when a fresh, in-service chamber is needed. These instructions are for installing the Motor Bracket and Mixing Motor into your Alectura Composting tank. **The motor power pack requires 220V mains power and should be kept raised up undercover and away from water ingress. While the motor is water resistant the power pack is not. PPE should be worn at all times when dealing with the chambers.**

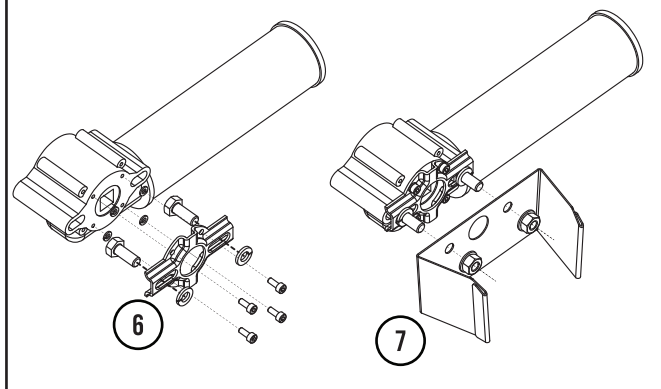
Take out the mixing ring from the chamber and set it aside. Remove the R-Clip securing the mixing key assembly (1). Take out the mixing key, clean it, and store it safely (2). Reuse the two bushings, mixing cog, and R-Clip in the following steps.



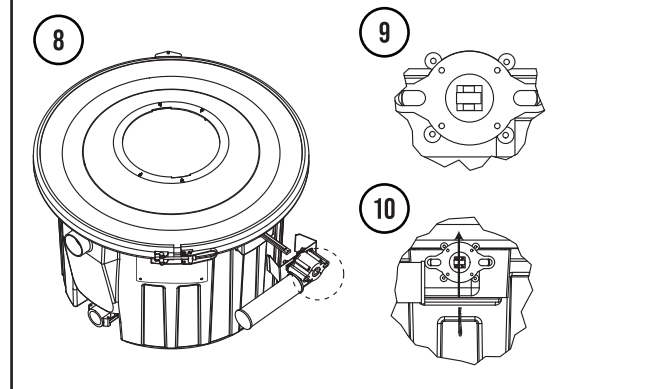
Silicone the M10X20 Washer (largest size) to the back of the Small Cog to hold it in place (3). Insert it into the bushings and cog assembly (4). Secure it with an R-Clip (5).



Mount the motor spacer plate to the motor using the four smaller bolts provided, ensuring the two larger bolts are fitted in between as shown (6). Avoid overtightening to keep the larger bolts aligned. Next add the motor bracket onto the motor and secure it with two washers and nuts (7).

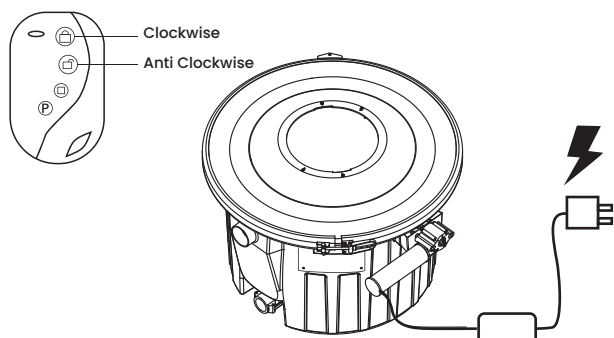


Place the mixing gear inside and assemble the in-service unit under the home **with the locking ring attached (8)**. To ensure ease of assembly, power the motor and rotate it until the motor collet is square (9). Mount the motor assembly to the mixing key and secure it with an R-Clip (10).

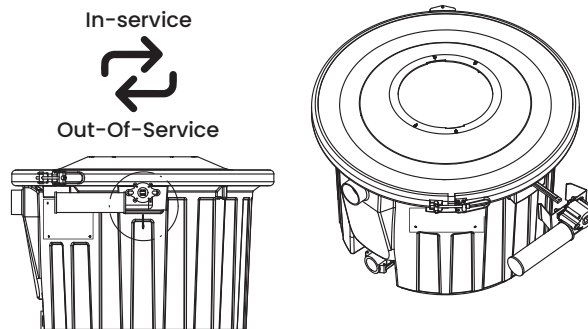


Plug in the power pack. Pressing the remote will move the mixing gear clockwise and counterclockwise. Repeat steps 1-5 with the out-of-service chamber to ensure a smooth changeover.

Follow the remote instructions section on the back of this sheet to set the mixing time required.



When swapping chambers, remove the R-Clip from the motor mount and slide the motor assembly off the shaft. Remove the locking ring and slide the lid up the chute. Replace the chamber and repeat steps 1-10 if not done so already.



When in doubt refer to the Alectura instruction manual for how to start a new chamber.

General Use Instructions

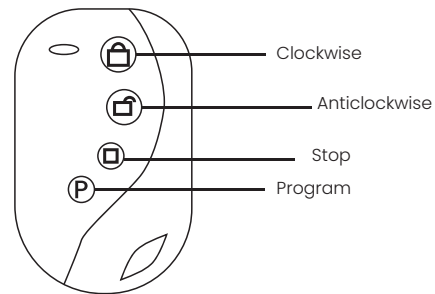
1. When using the Motor ensure the locking ring is fastened around the In-service unit before operating.
2. The Motor is to remain on the in-service unit at all times. The remote works by alternating between the clockwise and anti-clockwise operations. If clockwise will not function push anticlockwise and vice versa.
3. When swapping chambers; ensure the motor is removed first, removing the locking ring, lifting the lid up the chute and finally removing the chamber.

Remote Instructions

By default the motor will only mix the chamber for 30 seconds; follow the following commands to change it to 4 minutes:

1. Pressing **P** + **⌚** until the motor starts to move; after 4 minutes; press the **⏹** Stop button.
2. Repeat this process again.
3. Pressing **P** + **⌚** until the motor starts to move in the opposite direction; after the same desired time; press the **⏹** Stop button.

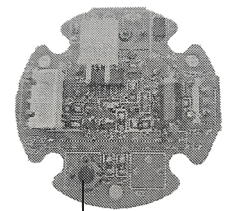
The motor has now been set to run for the desired time.



Troubleshooting Remote

Motor is not responsive:

1. Check the LED on the remote blinks when buttons are pushed. If there is no light replace the battery inside the remote and this should fix the issue.
2. If the key is functioning but the motor is not, check the power on the motor power brick is active. If the LED is not on the unit is not receiving power. Ensure the brick is not water damaged and has not shorted out.
3. If there is still no response the remote may need to be reconnected to the motor.
4. Unscrew the motor cap and push the learn button on the PCB for 1 second, then press any button the remote for 2 seconds to sync to the motor. To erase the code push the learn button and push the same button on the remote 3 times. You can have up to 3 remotes connected at any time.



Learn button

General Safety

1. **PPE:** Ensure you are wearing appropriate **Personal Protective Equipment (PPE)** when dealing with compost chambers.
 - Gloves: Wear durable gloves to protect hands from potential hazards.
 - Eye Protection: Safety goggles should be worn to prevent any debris from entering the eyes.
 - Respiratory Protection: Use masks to avoid inhaling compost particles or any airborne pathogens.
 - Clothing: Wear long sleeves and trousers to protect skin from contact with compost.
1. **Prior to use ensure you read the detailed instructions provided.**
2. **Area Clearance:** Ensure the area around the compost chamber is clear of any obstructions or flammable materials.
3. **Lid:** Ensure the chamber lid is securely closed and the locking ring is engaged before using the motor.
4. **Cords and Plugs:** Inspect power cords and plugs for damage. Do not use if any damage is found.
5. **Moving Parts:** Keep hands, feet, and clothing away from the rotating rake and other moving parts.
6. **Warranty:** Deviating from the provided instructions may void the warranty of the product.

Electrical

Power Supply	AC 240V
Operating Voltage	DC 24V
Operating Current	3A
Safety Detection	Over Current Detection
Remote Control Button	Clockwise / anti-clockwise / stop / program

Mechanical

Model	RA
Torque	25 N.M
Housing	Aluminium
Drive Method	Worm Gear
Noise	Below 50D.B
Operating Temperature	-25 °C / +50 °C
Motor Size	265*82*55mm