

The patented Key-System® from Enswico is a unique siphon technology to operate urinals whitout water. Replacing water with technology translates into an enormous worldwide water saving potential.

Key-Valve® E

The Key-Valve E, consisting of the Key-Valve and the Key-Ring , seals the drain opening to prevent the emission of odors from the drain without using water or other sealing liquids. This component has a life span of minimum 7'500 usages.

Features

- no water flush required
- allows liquid to flow into the drain, but prevents backflow of drain gases
- vertical mechanism
- compact unit
- easy to handle
- total life span depends on rate of usage
- the green Key-Ring is the optical life cycle indicator, it keeps the Key-Membrane®flexible and clean and creates in addition a pleasant scent
- the green Key-Ring mass is fully biodegradable
- suitable for most available types of waterless urinals
- allows to compensate negative drain pressures

Service-Key

The Service-Key is the tool for replacing the Key-Valve E

Features

- functional
- simple
- practical

Key-Adapter®

The Key-Adapter is the fitting for the Key-Valve E in the urinal

Features

- small and easy to install
- long life span
- proven for use in all kind of common materials in the sanitary market

Article numbers

- 104 000 - Key-Valve E
- 106 000 - Service-Key
- 107 000 - Key-Adapter
- 108 000 - Counternut for Key-Adapter (not pictured)

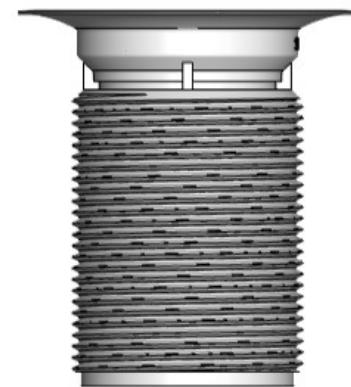


Service-Key®



Key-Ring®

Key-Valve®



Key-Adapter®

